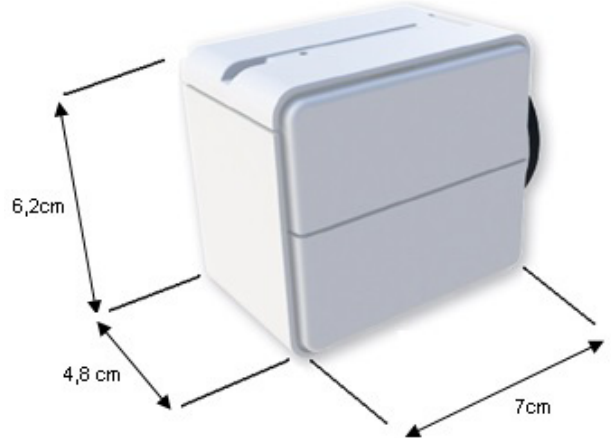
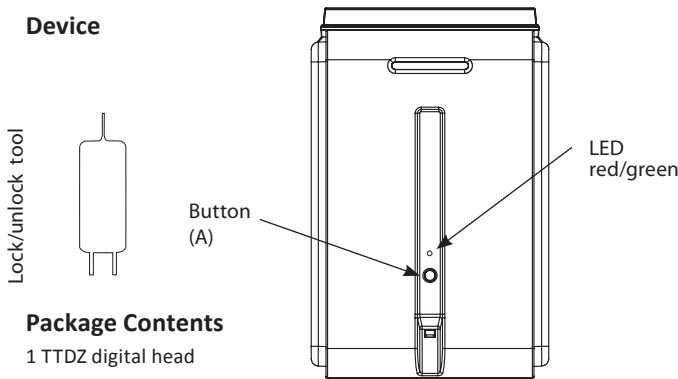


# TTDZ Instruction manual

## Description

### Device



### Package Contents

- 1 TTDZ digital head
- 1 Manual
- 1 Coupling Ring
- 3 Adapters (Danfoss RA, RAV, RAVL)
- 1 Lock / unlock tool

**Note:** If the device still fails to include, go through exclusion procedure (even if it is not shown on the screen) and then retry.

## 1. Inserting batteries

### a) Automatic inclusion

1. Open the battery compartment
2. Insert the batteries (matching the polarity)
3. Close the battery compartment

**Note:** Please note that after inserting the batteries, the device remains in automatic inclusion mode for about 3 minutes - after this time you will not be able to include it in this way.

4. Put the gateway into inclusion mode.
5. If the inclusion is successful, the green LED on the head remains fixed for 2 seconds and the device will appear on the screen.

6. Screw the coupling ring onto the valve as shown in Fig.1. Mount the head within 1 minute and press the button once quickly to include the device (Button A).

7. The LED goes out and the device then performs the adaptation procedure.

**Note:** If the LED does not go out, press the button on your device again quickly.

8. Change the name of the device for easy identification – see gateway instruction manual.

### b) Manual Inclusion

If you failed to include the device in automatic mode follow these steps to include it in manual mode:

1. Put the gateway into inclusion mode.
2. When the screen prompts, press the button with the instrument supplied (Lock/unlock tool) for 5 or more seconds and release when the LED becomes fixed for 2 seconds.
3. The LED on the head will then flash green.

4. Screw the coupling ring onto the valve as shown in Fig.1. Mount the head within 1 minute and press the button once quickly to include the device (Button A).

5. The LED goes out and the device performs the adaptation procedure.

**Note:** If the LED does not go out, press the button on your device again quickly.

## 2. Exclusion of the device

To exclude the device from your gateway carry out following steps.

1. Put the gateway into exclusion mode.
2. When the screen prompts, press the button with the instrument supplied (Lock/unlock tool) for 5 or more seconds and release when the LED becomes fixed for 2 seconds.
3. After a short time the head should disappear from the screen.
4. The LED blinks.
5. Remove the batteries.

**Note:** If device failed to exclude from the gateway, retry the operation or contact technical assistance.

**Warning:** After the exclusion procedure it is always necessary to remove the batteries.

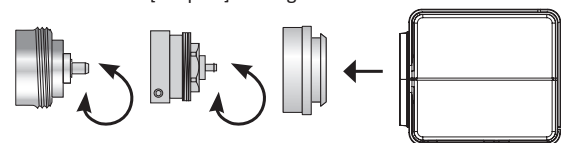
## Mounting

Installation is quick and easy - attach directly to most thermostatic valves available (M30 \* 1.5). Installation does not need any intervention as the hot water circuit is not interrupted and you will not need to drain the system.

1. If necessary, find a suitable adapter and attach it to the valve.
2. Turn the coupling ring (white) firmly on the valve or adapter.
3. Place the TTDZ ring and push it until it snaps into position.

**Note:** Do not start the adaptation process before TTDZ is mounted on the flanged sleeve.

Radiator Valve – [adapter] – Flanged sleeve – TTDZ



# TTDZ Instruction Manual

## Adaptation procedure

Repeat the adaptation process in following cases:

- a. to replace batteries;
- b. when head has malfunctioned.

To repeat the TTDZ head adaptation procedure:

1. Press and hold the pairing Button (A) for 3 or more seconds.
2. The LED starts flashing and the head motor activates.
3. Wait for the head motor to stop.
4. Press the head button once quickly.
5. The LED will turn off and the device performs the adjustment.

**Note:** During the adaptation do not turn the TTDZ on the coupling ring.

## LED

**OK** – Solid green for 2 seconds (inclusion / exclusion completed NIF sent, sent Awakening, ...)

**Failed** - Solid red for 2 seconds (Learning mode or sending package NIF / Awakening failed)

**Installation** - Flashing green (Mode - Installation)




**Error** - Flashing red (communication error)

## Manual wake-up

Once included on your gateway, the TTDZ thermostatic head works to a certain 'wake-up' time. This means that the device wakes up every 15 minutes to communicate with the gateway and goes back to sleep to save battery power.

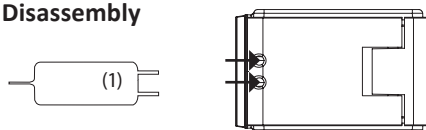
If you want the head to communicate with the gateway instantly, press the button once quickly. The head will awaken and its LED will flash green 1 second.

## Adapters

Heimeier, Junkers Landys+Gyr, MNG, Honeywell, Braukmann thread measure dimension of M 30x1,5	No adapter required
Danfoss RAV (the supplied plastic Pin shall be mounted on the valve pin)	
Danfoss RA, FAR	
Danfoss RAVL	

In the event that the required adapter is not in the kit, please consult the following link: <http://www.ecodhome.co.uk/wp-content/uploads/2014/02/Valve-Adaptor-Guide.pdf>

## Disassembly



1. Insert both tips of the tool provided (1) into TTDZ opening.
2. Remove the TTDZ from the adapter / valve.